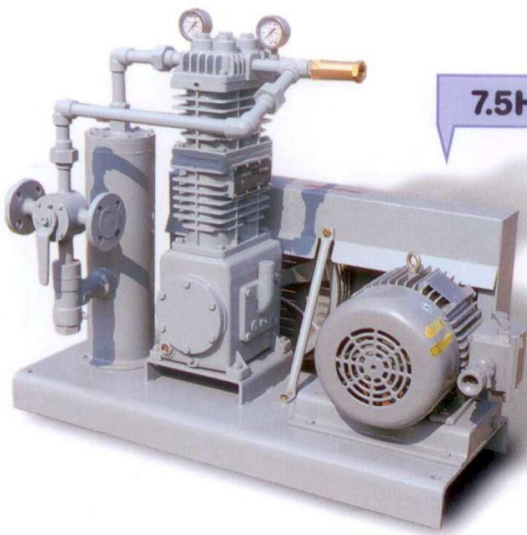


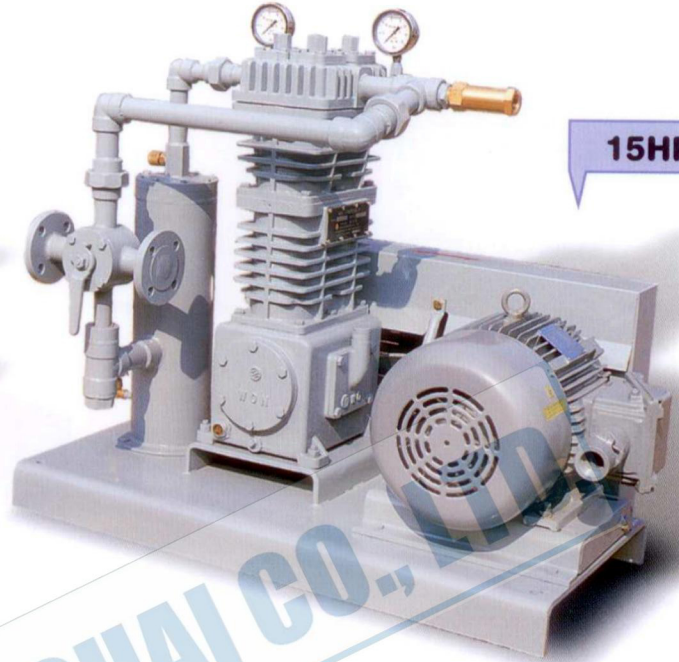


GAS COMPRESSOR

MODEL NO : WGCL - 7122 (L.P.G), WGCN-7222(NH₃)



7.5HP



15HP

MATERIAL

NO	PART NAME	MATERIAL	NO	PART NAME	MATERIAL
1	CRANK CASE	Fcd45	6	CROSS PISTON	AC8B
2	CROSS CYLINDER	Fcd45	7	CONNECTING ROD	AL
3	COMPRESSOR CYLINDER	Fcd45	8	SUCTION VALVE	09CH17N-3SC
4	HEAD	Fcd45	9	DISCHARGE VALVE	09CH17N-3SC
5	CRANK SHAFT	Fcd50	10	ROD PACKING	PTFE + CARBON

SPECIFICATION

PART	SIZE	
	7.5 HP	15 HP
MOTOR CAPACITY	7.5 HP	15HP
CONNECTION	25A JIS-20K RF	40A JIS-20K RF
PISTON DIAMETER	ø 80	ø 105
STROKE	65mm	78mm
MOTOR TYPE	Ex D2G4	Ex D2G4
MOTOR PULLEY	B 3-LANE 6.5"	B 3-LANE 6.5"
COOLING PULLEY	B 3-LANE 16"	B 3-LANE 16"
REVOLUTION PER MINUTE	707 RPM	713 RPM
DISCHARGED VOLUME	370 l /min	770 l /min
FILLING TIME of 10 TON LPG	55~70 min	26~34 min

- Application :
transfer & collect gas, which compressed gas and generate differential pressure from tank lorry to storage tank
- Hydrostatic test pressure :
30kg/cm²
- Pneumatic test pressure :
22kg/cm²
- Fluid : LPG, NH₃

※ Remark 1. Material is to be changed in case of NH₃
2. Please contact us when applying for other gases

※참고 1. 암모니아용일 경우 일부 재질을 변경함.
2. 다른 가스 용도로 사용할 경우 당사로 연락바람.